

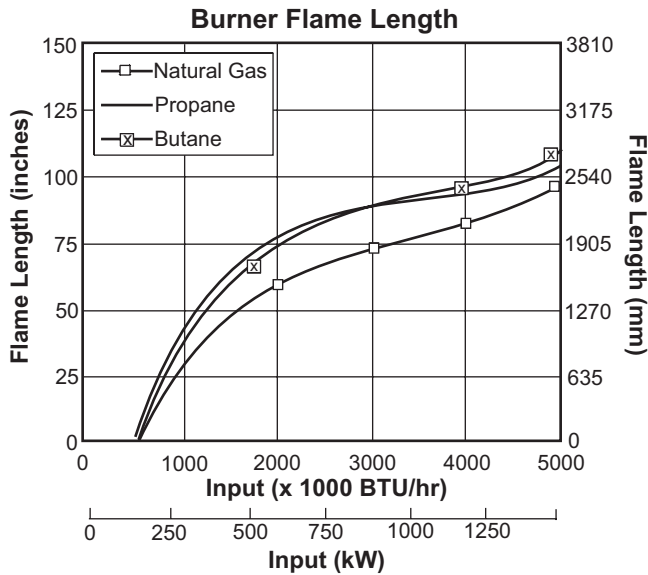
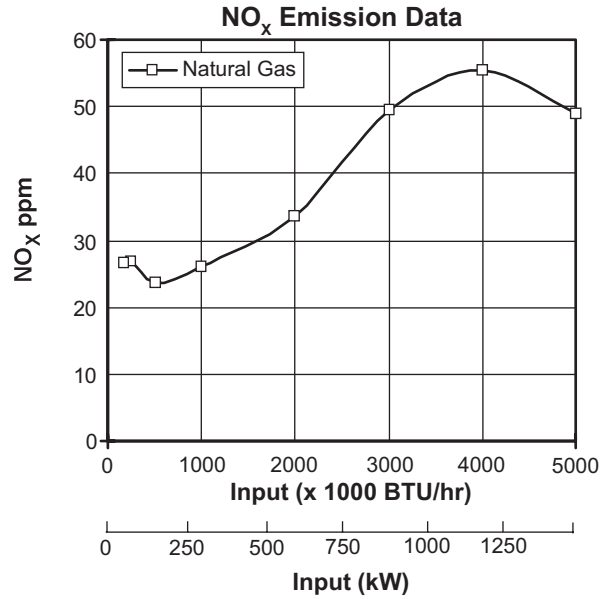
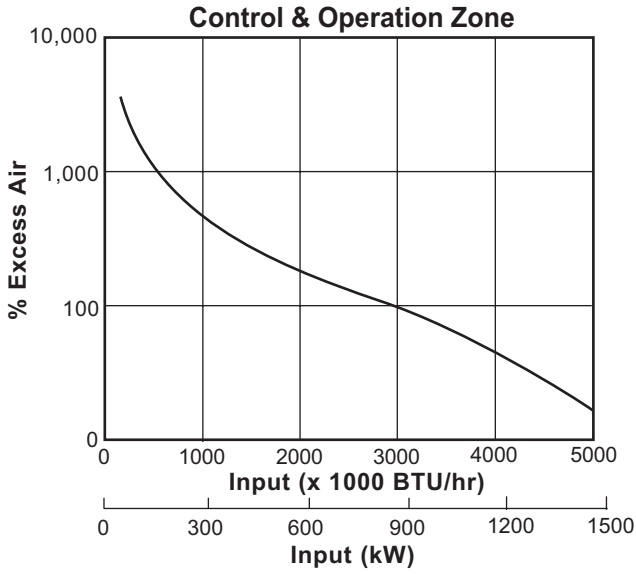
Eclipse ThermAir Burners

Model TA500
Version 1

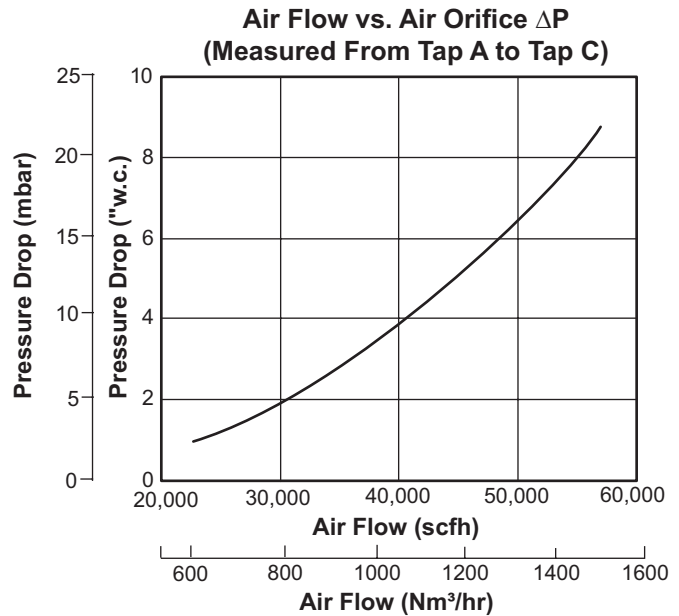
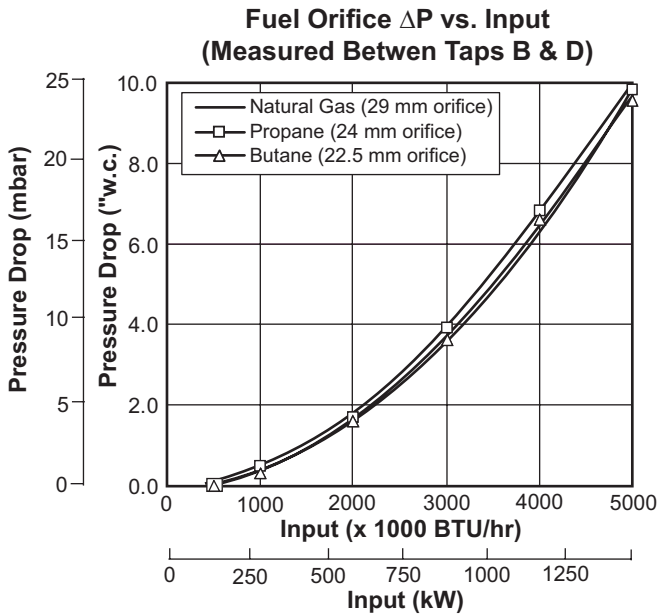
Parameter		Specifications			
Maximum Input (BTU/hr) <i>(To maintain 15% air with the standard air orifice and standard combustion air blower.)</i>	Frequency	BTU/hr	" w.c.	kW	mbar
	60 Hz Packaged Blower	5,277,000	-1.0	1547	-2,5
		5,000,000	0.0	1467	0,0
		4,773,000	1.0	1400	2,5
	50 Hz Packaged Blower	5,315,000	-1.0	1556	-2,5
		5,074,000	0.0	1486	0,0
4,821,000		1.0	1412	2,5	
Minimum Input <i>Natural Gas, Propane, Butane</i>		BTU/hr		kW	
		167,000		49,0	
Main Gas Inlet Pressure <i>Fuel pressure at gas inlet (Tap B)</i>		" w.c.		mbar	
<i>Natural Gas</i>		8.2		20	
<i>Propane</i>		8.6		21	
<i>Butane</i>		8.7		21	
High Fire Flame Length <i>Measured from outlet end of combustor</i>		inches		mm	
<i>Natural Gas</i>		97		2464	
<i>Propane</i>		107		2718	
<i>Butane</i>		112		2845	
Maximum Chamber Temperature <i>Note: For higher temperatures, contact Eclipse.</i>		Tube	°F		°C
		Alloy Tube	1500		820
		SiC Tube	1900		1040
Flame Detection		UV scanner only			
Fuel		Natural gas, propane, or butane <i>For any other gas, contact Eclipse.</i>			

- All information is based on laboratory testing in neutral (0.0" w.c.) chamber with standard combustion design. Different chamber conditions and/or combustor design will affect the data.
- Maximum inputs are given for the standard combustion air blower without an air filter.
- All inputs based upon gross calorific values and standard conditions: 1 atmosphere, 70°F (21°C).
- Blower motor service factors greater than 1.0 may be required when firing into negative chamber pressure applications. For specific application questions, contact Eclipse.
- Eclipse reserves the right to change the construction and/or configuration of our products at any time without being obliged to adjust earlier supplies accordingly.

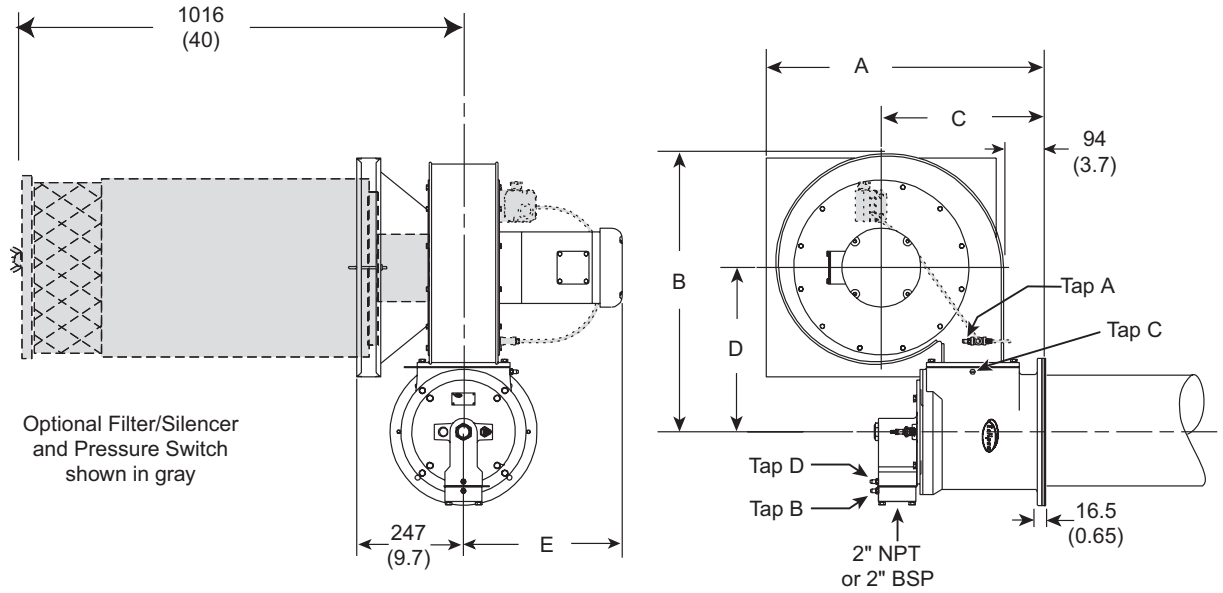
Performance Graphs



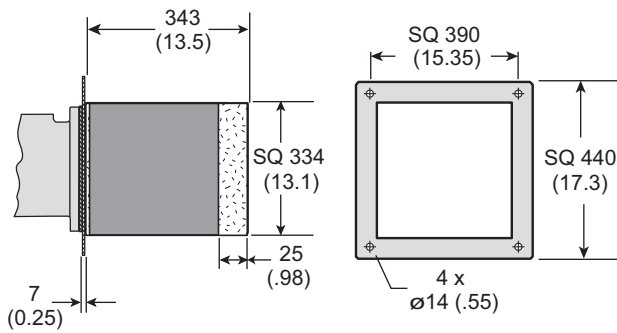
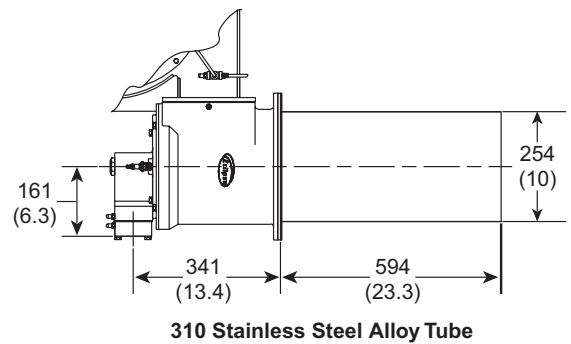
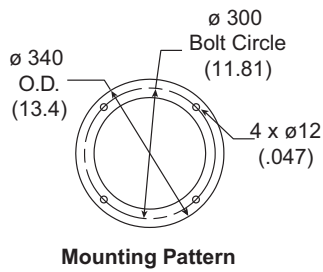
Notes on Emission Data
<p>NO_x emission data is given for:</p> <ul style="list-style-type: none"> • Ambient combustion air ~70° F (20° C) • Minimal process air velocity • ppm volume dry at 3% O₂ • Neutral chamber pressure <p>Emissions are influenced by:</p> <ul style="list-style-type: none"> • Chamber conditions • Fuel type • Firing rate • Combustion air temperature <p>CO emission is largely influenced by chamber conditions. Contact Eclipse for an estimate of CO emission on your application.</p>



Dimensions mm (inches)

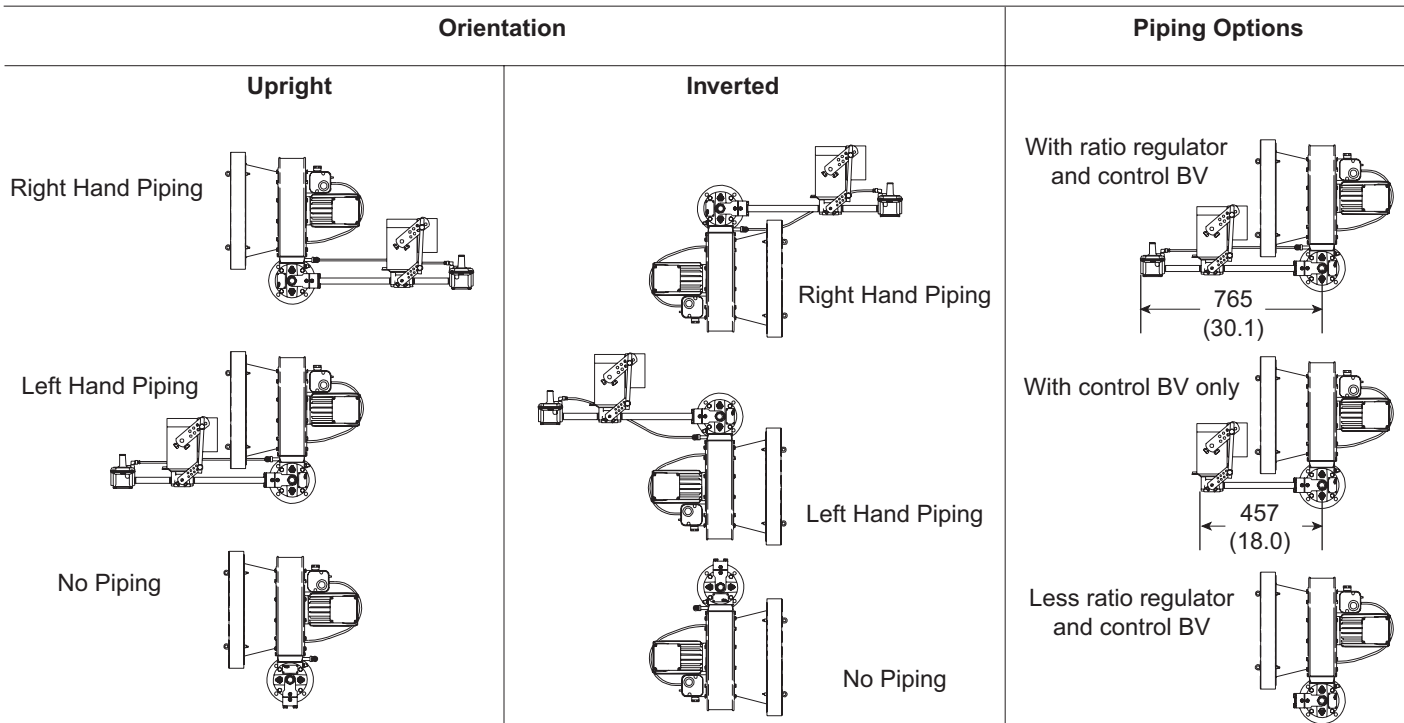


Port Connection		
Spark Plug	14mm	
Flamerod or Scanner	0.5" NPT	
Peepsight	1" NPT	
Weights		
	lbs	kg
Burner with blower	163	74
Burner less blower	90	41
Filter/Silencer	52	24



Blower 10" w.c.										
Hz	A		B		C		D		E	
	mm	in	mm	in	mm	in	mm	in	mm	in
50	614	24.2	636	25.0	359	14.1	367	14.4	362	14.3
60	597	23.5	582	22.9	331	13.0	342	13.5	333	13.1

Piping





Offered By:

Power Equipment Company
2011 Williamsburg Road
Richmond, Virginia 23231
Phone (804) 236-3800
Fax (804) 236-3882

www.peconet.com